

Domitran

***Composite Technologies
Industrial Innovations***

Brand Heritage



Domitran is a family company with strong industrial design engineering and manufacturing innovation heritage dating all the way back to 80s.

Composite Technologies



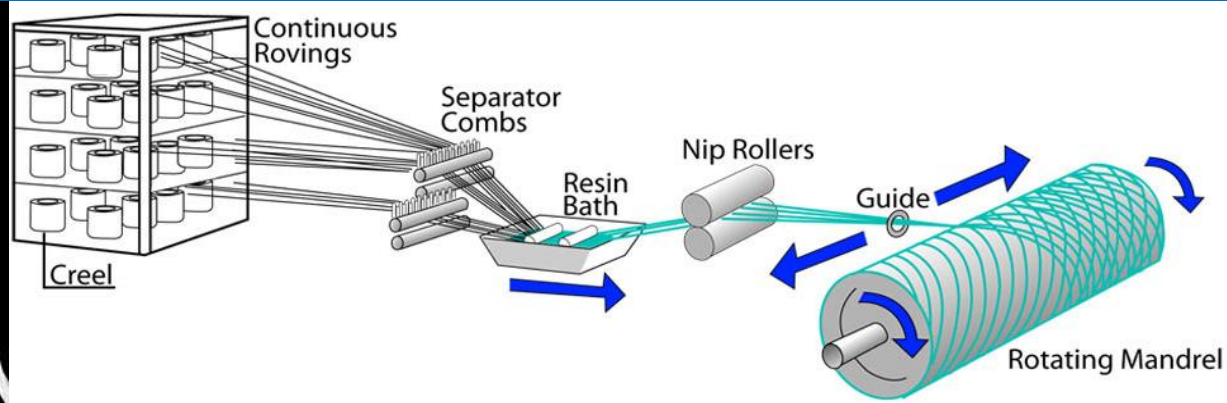
Developing and manufacturing of various composite parts according to our customer needs, we are offering high quality products in the fields of water, maritime, energy & renewables and oil & gas industry.

Industrial Innovations



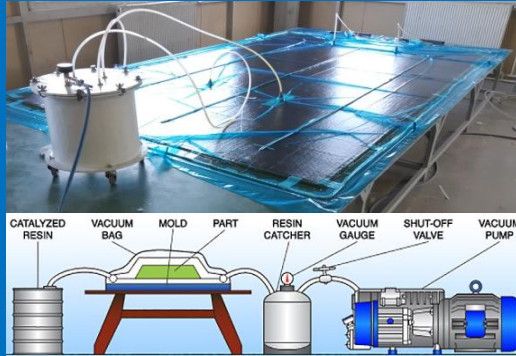
Our team's extensive know-how and experience from numerous projects in many industries provides solutions with high additional value, taking into account various excellence indicators.

Filament Winding



Domitran is one of the world's industry pioneers dealing with Filament Winding Technologies from 90s. The process uses a continuous length of Direct Single End Roving and results in a shell of materials with high Strength-to-weight ratio due to the high percentage of glass in the composite matrix. This process is primarily used for hollow, generally circular or oval sectioned components, such as pipes and tanks. Fibre tows are passed through a resin bath before being wound onto a mandrel in a variety of orientations, controlled by the fibre feeding mechanism, and rate of rotation of the mandrel.

Vacuum Infusion

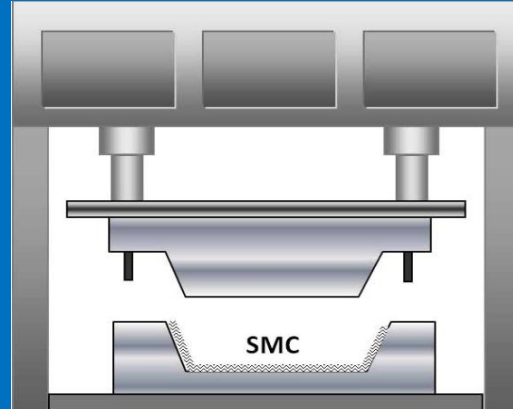


Vacuum Infusion Process

GRP / CRP Plates up to 3x6 m
Water Jet Cutting to Final Shape

Diferent Shapes at Request

SMC / BMC / RTM



Compression Molding Process

Prepreg / Epoxy / Polyester resin

Hand Lay-up



Fiber & Resin Open Molding

Complex Shapes



Pipes / Tubes



GRP/ FRP Composite Pipe

Filament Winding Technology

Dia. DN 50 up to DN2400

Length up to 6 m

Dual Laminate Pipe FRP

PVC, PE-HD, PP -Liners

Lightweight

Non-Corrosive

Chemically Resistant

Anti-Bacterial

Maintenance Free

Longest Lifecycle

Light Poles



GRP Poles

Length up to 8 m

Lightweight, easy to install

Durable, Attractive

Weather and UV-resistant

Testing DIN EN 61, EN 40-7

Plates



GRP Plates

Sandwich panels

Surface up to 3x6 m

Optional Thickness

Gelcoat surfaces

Flanges / Fittings



GRP/FRP Flanges / Fittings

EN / ANSI Standard Versions

Dual Laminate

PVC, PE-HD, PP Liner

Custom Versions

Tanks



GRP Composite Material
Horizontal / Vertical
Diameter up to 2,4 m
Length up to 6 m
Lightweight
Non-Corrosive
Chemically Resistant
Anti-Bacterial
Maintenance Free
Longest Lifecycle

Special Tanks



Fire Fighter Truck Tanks
Municipal Truck Tanks
ISO Tanks
Mandatory Testing
Mandatory Certification

Cooling Towers



Water Cooling Systems
Unit Power 200 kW...2 MW
Low Noise
Multiple Systems
Reliability and Long Life
Lightweight Design
Maintenance Savings
Non-Corrosive

Waste Water Plants



Waste Water Plant
Capacity 200 L/h...2000 L/h
Eco Friendly
Inovative Electrocoagulation Treatment
Simple Installation
Suitable for Marinas and Shipyards

Manholes



GRP Material
Underground Cables Connections
Simple Installation, Lightweight design
Tested to 30 Tones Direct Vertical Load
Reliability and Long Life
Certified Types
Suitable for Roadway, Walking Paths,
Green Areas, etc...

Electric Cabinets

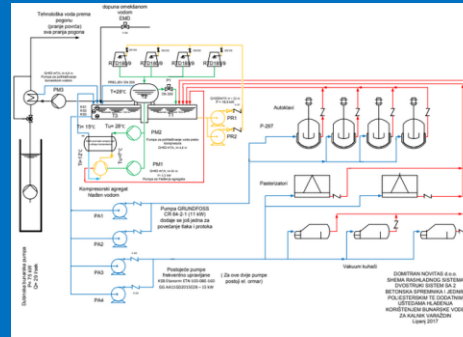
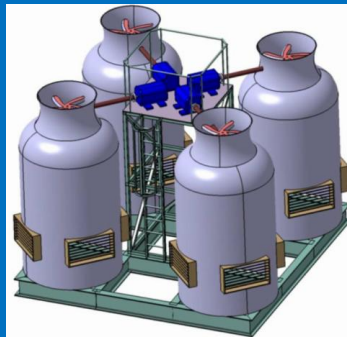
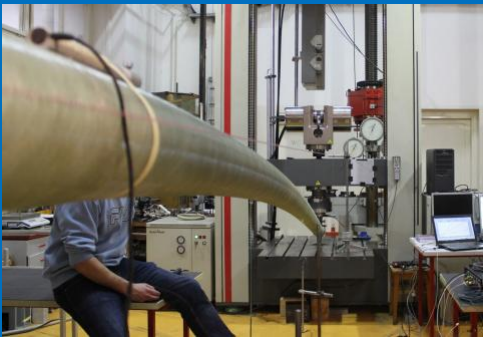


Electric Cabinets with Elements
Freestanding Electrical Enclosures
For Industrial and Distribution Centers
Connecting Measuring Cabinets
Self-extinguishing
UV stable
Shock resistant , IP 54
VDE 0660, T 505/07.90, HEP-a N. 070.01

Composite Insulators



Araldite Epoxy Resin
Electrical Insulation up to 24/36 kV
IEC Standards Type Certificates



Prototypes



Light poles - GRP

TYP: RDS

Lenght 3, 4, 5, 6 m

*Class load:
I, III and IV Wind Zone*

*Wind Speed up to 188 km/h
UV Protective Coating*

Non Electrically Conductive

*Standard Lamp Connecting
Diameter 60 / 74 mm*

Suitable for Solar Lighting

*Direct Burial or Anchor
Bases, Combitube*

Composite Isolators

TYP: VPI, IN, H

*Transmission voltage:
36/24 kV*

*Material:
Araldite Epoxy Resin*

Pin/Line Post Insulators

Suspension Insulators

Shackle Insulator

Supporting Insulator

Standard Cooling Towers

TYP: RTD 100, 140, 180, 180 P5

Direct Evaporative Cooling

Material: GRP Polyester

Water Flow: 5,0 ... 125 m³/h

Motor Fan: 1,1 ... 7,5 kW

*Noise Level:
90 95 dB(A)*

*Heat load (Ti/To = 36/28 °C):
45 ... 1200 kW (tf=23°C)*

Electrical Enclosures

TYP: KPMO; KP; RS; OPS

*Freestanding – Connection –
Measuring Cabinets*

*Connection - Measuring
Cabinets - Wall Mounted*

Material: GRP / PVC

*Self-Leveling Fire Protected
UV Protective Coating*

*Suitable for Air and Ground
Connection - IP 54*

Domitran Program Management System

Domitran Production Plant

First Phase

Program Data Acquisition

*Product Requirements
Quality Requirements
Legislation Requirements*

*Design Concept
Manufacturing Concept
Logistic Concept*

Business Case Concept

Second Phase

Program Feasibility Study

*Customer Design Approval
DFMEA
Prototype Delivery*

*Design For Manufacturing
PFMEA
Manufacturing Planning*

Production Tooling

Third Phase

Production Plant Setup

*Pre-production Trials
Production Trials
Action Plan Definitions*

*Start Of Production
Production Ramp-up
Mass Production*

Serial Products Delivery

Lean Manufacturing

White Plant

*Health Safety Environment
5S Methodology
2 Shifts*

*Pull System
Shop Stocks
Safety Stocks*

No Stress Atmosphere

Company:
Domitran Novitas d.o.o.

Street:
Krečaves 21

City:
10380 Sveti Ivan Zelina

Country:
Croatia (European Union)

E-mail:
info@domitran.hr

Tel.:
+385 1 2062 314

Mob.:
+385 91 566 56 00

+385 99 522 86 79

